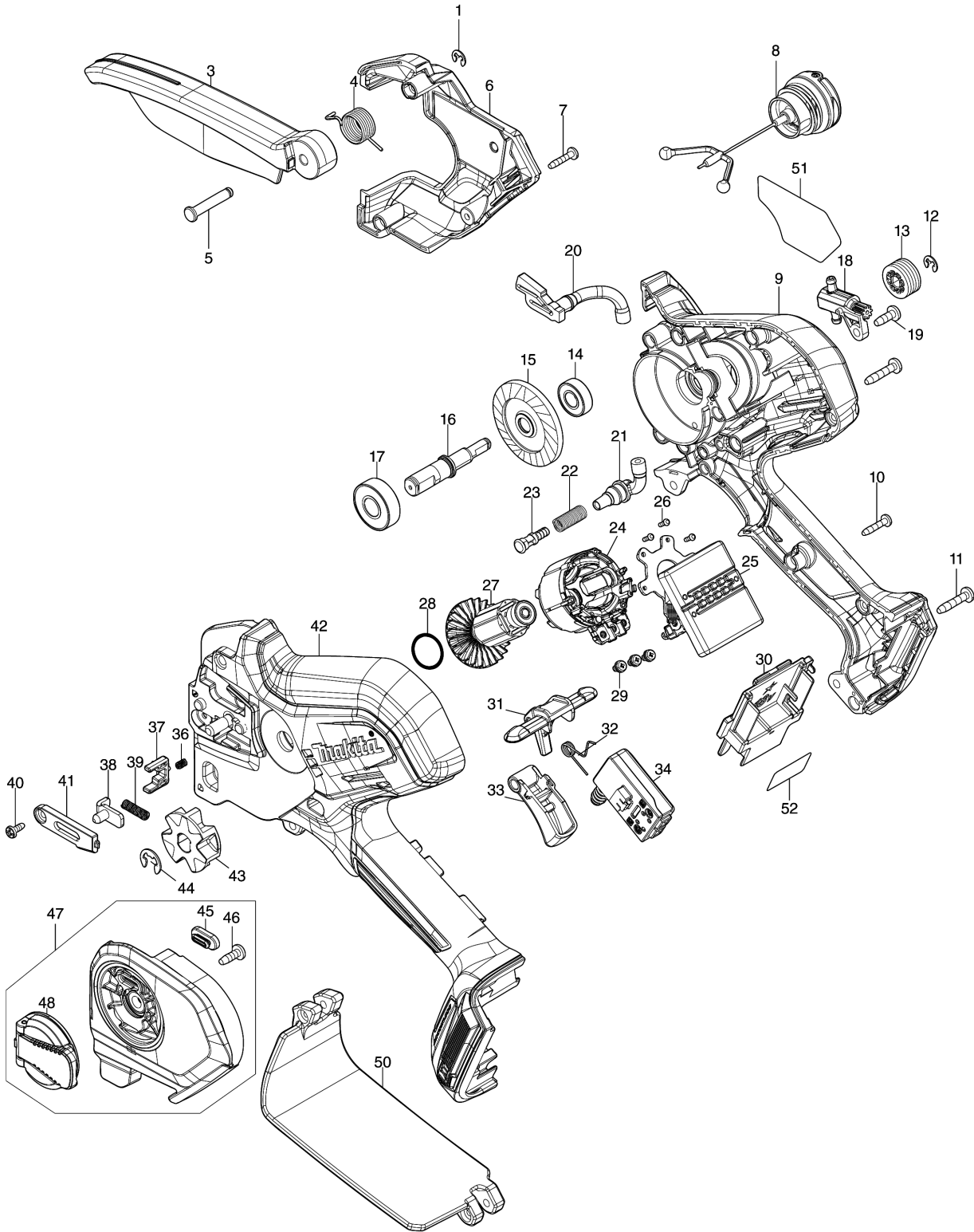


Model No.DUC101 100MM CORDLESS CHAIN SAW



Model No.DUC101 100MM CORDLESS CHAIN SAW

Position	Artikel-Nr.	Beschreibung	I/C	Stk.	New/Old	Opt. 1	Opt. 2	Hinweis
001	961011-9	STOP RING E-4		1				
003	413M04-5	SAFETY COVER		1				
004	232785-2	TORSION SPRING 14		1				
005	256A31-5	SHOULDER PIN 5		1				
006	413L96-8	HOUSING R COVER		1				
007	266429-2	TAPPING SCREW 3X16		3				
008	126832-8	TANK CAP ASSEMBLY		1				
C10	213894-6	O-RING 25		1				
009	183Y31-5	HOUSING SET		1				
C10	263005-3	RUBBER PIN 6		2				
C20	347A70-7	TANK GUARD		1				
D10		INC. 42						
010	266429-2	TAPPING SCREW 3X16		10				
011	911138-5	P.H.SCREW M4X20 WITH WR		2				
012	961011-9	STOP RING E-4		1				
013	226884-0	WORM GEAR		1				
014	211166-3	BALL BEARING 698DDW		1				
015	227A17-6	SPIRAL BEVEL GEAR 53		1				
016	327A89-2	SPINDLE		1				
017	210059-1	BALL BEARING 6000DDW		1				
018	141N25-0	OIL PUMP COMPLETE		1				
019	266427-6	TAPPING SCREW 4X12		1				
020	422968-4	OIL TUBE 3-60		1				
021	422969-2	OIL TUBE 3-25		1				
022	232774-7	COMPRESSION SPRING 6		1				
023	413L02-3	NIPPLE		1				
024	629B92-8	STATOR		1				
025	620M06-6	CONTROLLER		1				
026	266490-9	TAPPING SCREW PT 2X6		3				
027	619791-8	ROTOR		1				
028	213A05-9	O-RING16		1				
029	652069-6	FLAT HEAD SCREW M3X6		3				
030	643874-2	TERMINAL		1				
031	413L98-4	LOCK OFF LEVER		1				
032	232784-4	TORSION SPRING 6		1				
033	413L97-6	SWITCH LEVER		1				
034	650033-1	SWITCH C3XA-3PSPM-1		1				
036	233211-4	COMPRESSION SPRING 2		1				
037	413M02-9	STOPPER		1				
038	347A69-2	TENSION SLIDE		1				
039	232787-8	COMPRESSION SPRING 4		1				
040	266492-5	TAPPING SCREW 3X8		1				

Please order the parts with part number.

Print Date 9/12/2022

Model No.DUC101 100MM CORDLESS CHAIN SAW

Position	Artikel-Nr.	Beschreibung	I/C	Stk.	New/Old	Opt. 1	Opt. 2	Hinweis
041	413M03-7	COVER		1				
042	183Y31-5	HOUSING SET		1				
C10	263005-3	RUBBER PIN 6		2				
C20	347A70-7	TANK GUARD		1				
D10		INC. 9						
043	227947-5	SPROCKET 7		1				
044	961013-5	STOP RING E-7		1				
045	422970-7	GROMET		1				
046	266427-6	TAPPING SCREW 4X12		1				
047	136914-8	SPROCKET COVER ASS'Y		1				
D10		INC. 45,46,48						
048	141M77-5	NUT COMPLETE		1				
050	141M76-7	REAR HAND GUARD COMPLETE		1				
C10	8062G7-3	CAUTION LABEL		1				
051	8584P7-4	DUC101 NAME PLATE		1				
052	8584R6-0	DUC101 SERIAL NO. LABEL		1				
A01	1910W0-3	GUIDE BAR 4 SET		1				
A02C	198457-8	CHAIN EDGER SET		1				
A02D	198457-8	CHAIN EDGER SET		1				
A03	199897-3	OIL VESSEL SET		1				
A04	413M40-1	GUIDE BAR CASE 125		1				
A05	1910V6-4	SAW CHAIN 4 SET		1				
A06B	450128-8	BATTERY COVER		1				
A06D	450128-8	BATTERY COVER		1				
A07B	***DC18SD	DC18SD BATTERY CHARGER		1				
D10		COMPO-PARTS						
A07D	***DC18SD	DC18SD BATTERY CHARGER		1				
D10		COMPO-PARTS						
A08B	197600-6	BATTERY BL1830B SET		1				
A08D	197600-6	BATTERY BL1830B SET		1				
E01	807950-8	SOUND 95DB LABEL		1				

Please order the parts with part number.

Print Date 9/12/2022